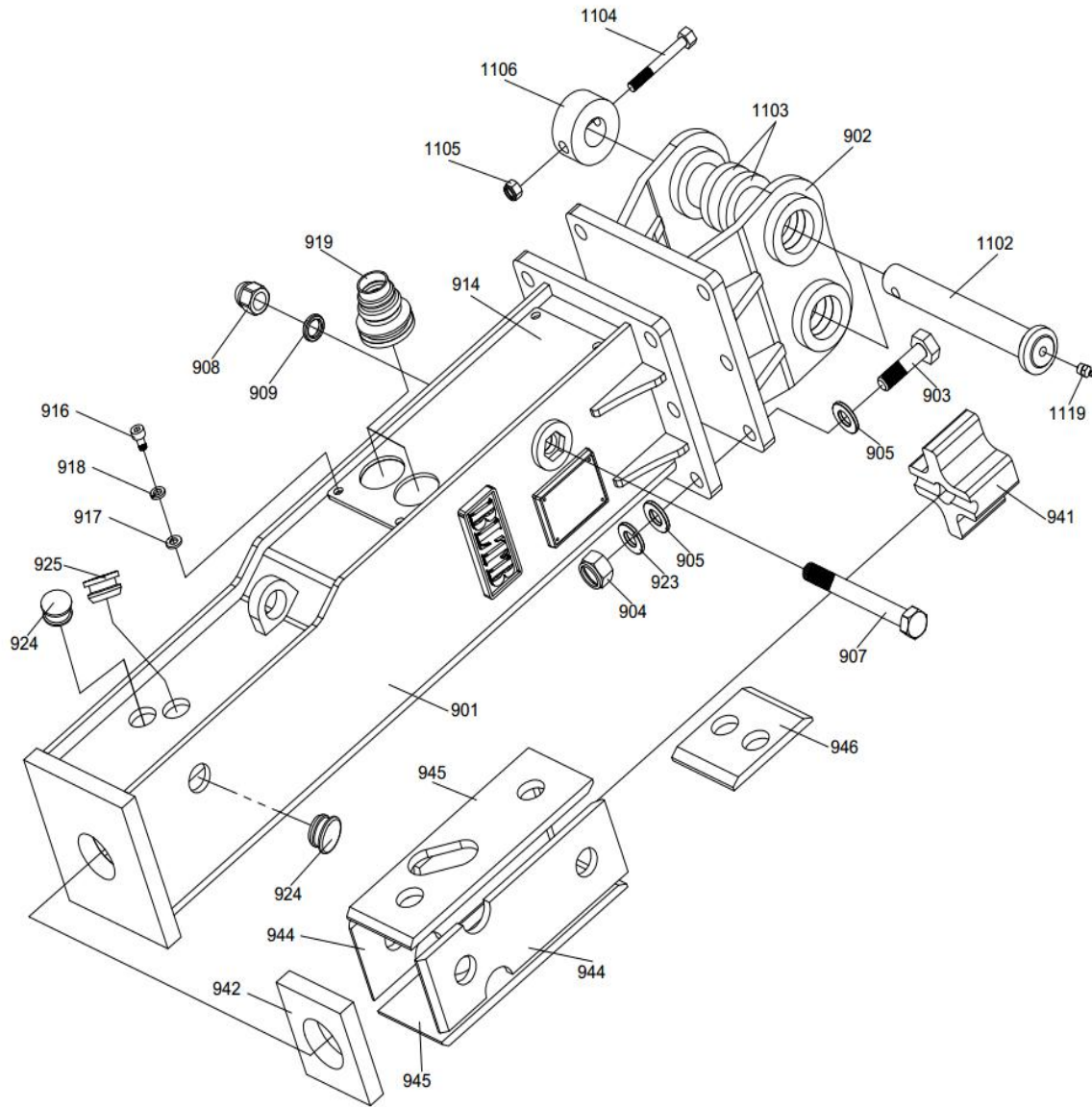
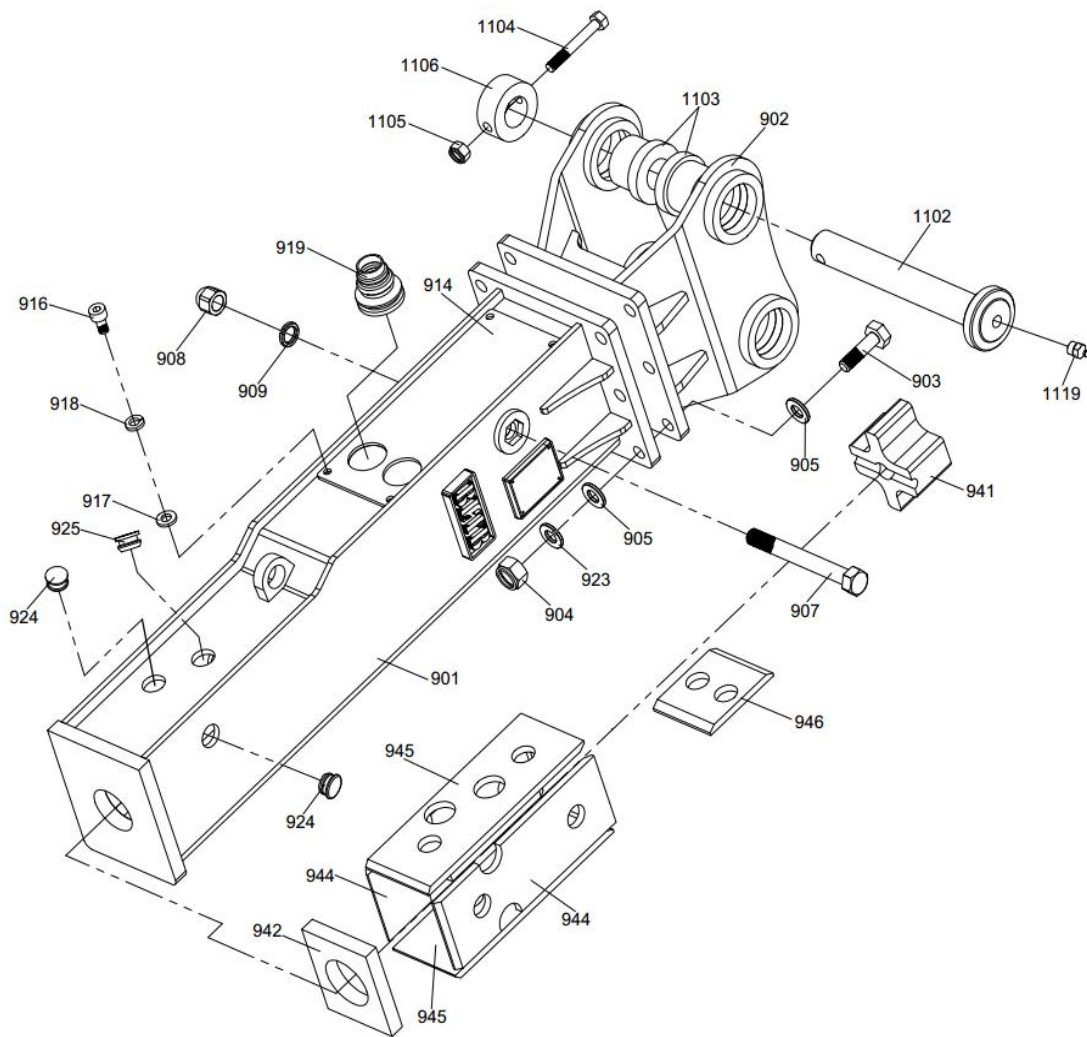


S. N.	PARTS NAME	SPEC	Q' TY
<b>40-900</b>	FRAME ASS' Y		
40-901	FRAME (BOX TYPE)		1
40-902	MOUNT CAP		1
40-903	M/C HEX BOLT	M12*45	8
40-904	M/C HEX NUT	M12	8
40-905	M/C SPRING WASHER	φ 12	16
40-923	SPRING WASHER	φ 12	8
40-924	RUBBER PLUG		2
40-925	RUBBER PLUG		1
40-926	RUBBER PLUG		1
<b>40-940</b>	BUFFER PLATE ASS'		
40-941	BACK BUFFER	112*98*65	1
40-942	LOWER DAMPER	100*106*10	1
40-1102	PIN		2
40-1104	PIN HEX BOLT	M10*55	2
40-1105	PIN HEX NUT	M10	2



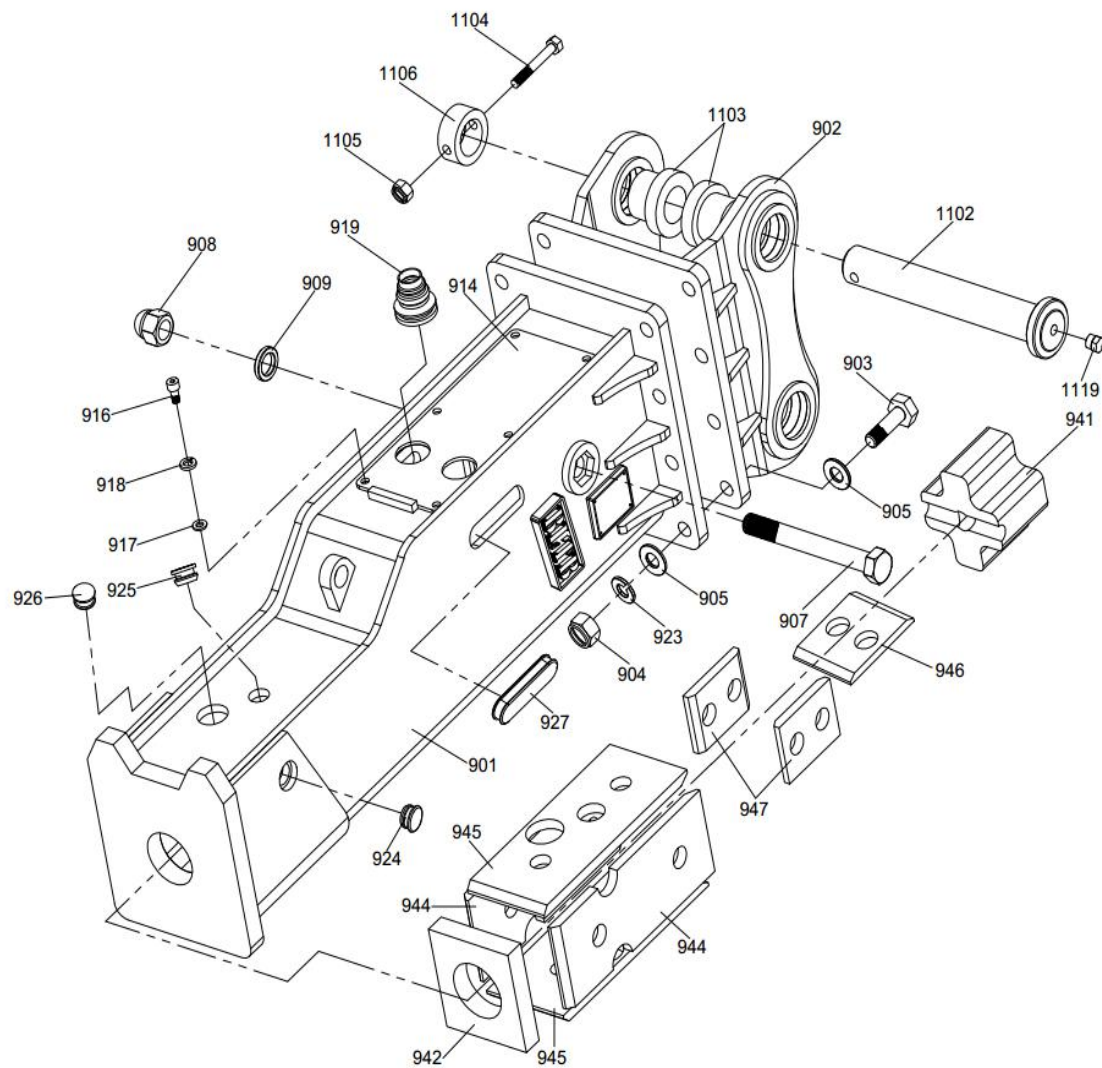
BLTB-45

S. N.	PARTS NAME	SPEC	Q' TY
<b>45-900</b>	<b>FRAME ASS'Y</b>		
45-901	FRAME (BOX TYPE)		1
45-902	MOUNT CAP		1
45-903	M/C HEX BOLT	M16*60	6
45-904	M/C HEX NUT	M16	6
45-905	M/C SPRING WASHER	φ 16	12
45-907	SIDE HEX BOLT	M18*1.5*166	1
45-908	HEX NUT	M18*1.5	1
45-909	SPRING WASHER	φ 18	1
45-914	UP SIDE DAMPER	362*125*4.5	1
45-916	HEX BOLT	M8*16	4
45-917	WASHER	φ 8	4
45-918	SPRING WASHER	φ 8	4
45-919	IN/OUT PLUG		2
45-923	SPRING WASHER	φ 16	6
45-924	RUBBER PLUG		2
45-925	RUBBER PLUG		1
<b>45-940</b>	<b>BUFFER PLATE ASS'</b>		
45-941	BACK BUFFER	112*98*65	1
45-942	LOWER DAMPER	118*104*20	1
45-944	SIDE DAMPER	279*92*10	2
45-945	UP&DOWN DAMPER	279*104*10	2
45-946	SIDE DAMPER	120*100*10	1
45-1102	PIN		2
45-1103	T-BUSH		4
45-1104	PIN HEX BOLT	M10*80	2
45-1105	PIN HEX NUT	M10	2
45-1106	STOP BAR		2
45-1119	GREASE NIPPLE	G 1/4"	2



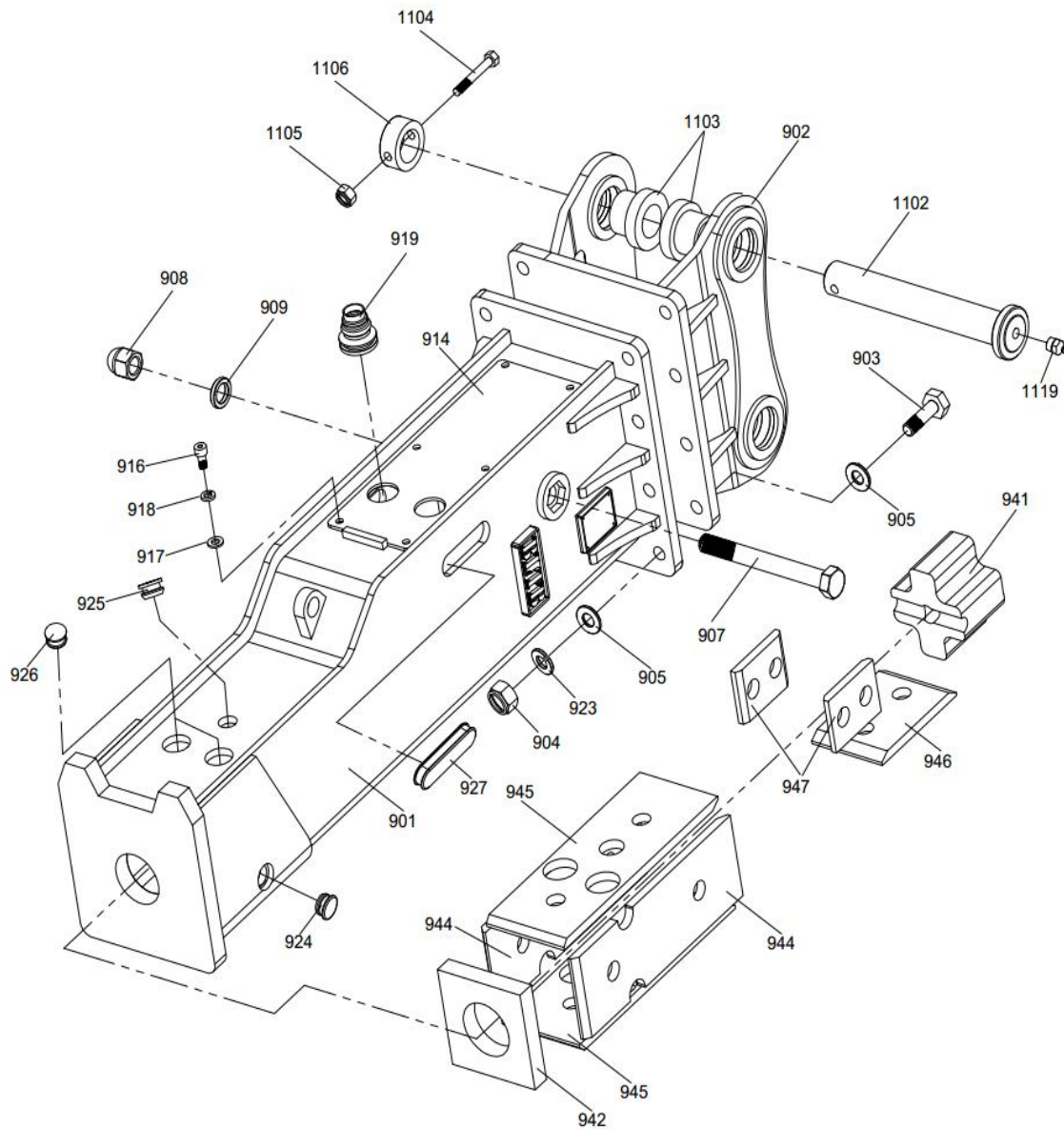
BLTB-53

S. N.	PARTS NAME	SPEC	Q' TY
<b>53-900</b>	FRAME ASS' Y		
53-901	FRAME (BOX TYPE)		1
53-902	MOUNT CAP		1
53-903	M/C HEX BOLT	M16*60	6
53-904	M/C HEX NUT	M16	6
53-905	M/C SPRING WASHER	φ 16	12
53-907	SIDE HEX BOLT	M20*1.5*175	1
53-908	HEX NUT	M20*1.5	1
53-909	SPRING WASHER	φ 20	1
53-914	UP SIDE DAMPER	374*133*4.5	1
53-916	HEX BOLT	M8*16	4
53-917	WASHER	φ 8	4
53-918	SPRING WASHER	φ 8	4
53-919	IN/OUT PLUG		2
53-923	SPRING WASHER	φ 16	6
53-924	RUBBER PLUG		2
53-925	RUBBER PLUG		1
<b>53-940</b>	BUFFER PLATE ASS'		
53-941	BACK BUFFER	126*106*65	1
53-942	LOWER DAMPER	132*112*20	1
53-944	SIDE DAMPER	299*110*10	2
53-945	UP&DOWN DAMPER	299*110*10	2
53-946	SIDE DAMPER	120*100*10	1
53-1102	PIN		2
53-1103	T-BUSH		4
53-1104	PIN HEX BOLT	M12*90	2
53-1105	PIN HEX NUT	M12	2
53-1106	STOP BAR		2
53-1119	GREASE NIPPLE	G 1/4"	2

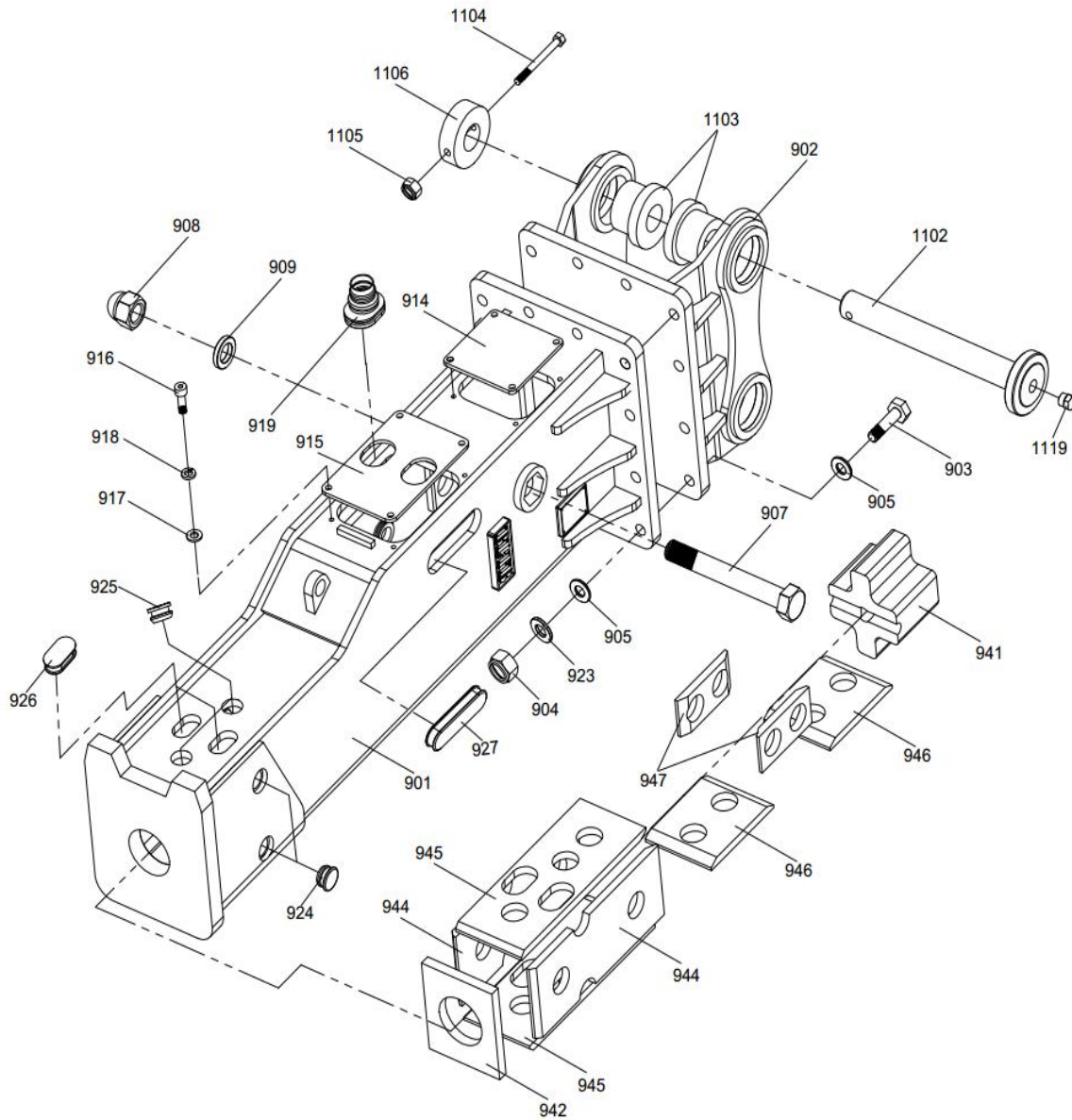


S. N.	PARTS NAME	SPEC	Q' TY
<b>70-900</b>	FRAME ASS' Y		
70-901	FRAME (BOX TYPE)		1
70-902	MOUNT CAP		1
70-903	M/C HEX BOLT	M20*70	8
70-904	M/C HEX NUT	M20	8
70-905	M/C SPRING WASHER	φ 20	16
70-907	SIDE HEX BOLT	M27*2*230	1
70-908	HEX NUT	M27*2	1
70-909	WASHER	φ 27	1
70-914	UP SIDE DAMPER	380*153*5	1
70-916	HEX BOLT	M10*20	6
70-917	WASHER	φ 10	6
70-918	SPRING WASHER	φ 10	6
70-919	IN/OUT PLUG		2
70-923	SPRING WASHER	φ 20	8
70-924	RUBBER PLUG		2
70-925	RUBBER PLUG		1
70-926	RUBBER PLUG		1
70-927	RUBBER PLUG		1
<b>70-940</b>	BUFFER PLATE ASS'		
70-941	BACK BUFFER	150*140*107	1
70-942	LOWER DAMPER	156*145*20	1
70-944	SIDE DAMPER	340*130*15	2
70-945	UP&DOWN DAMPER	340*140*15	2
70-946	SIDE DAMPER	130*120*15	1
70-947	SIDE DAMPER	120*90*15	2
70-1102	PIN		2
70-1103	T-BUSH		4
70-1104	PIN HEX BOLT	M12*90	2
70-1105	PIN HEX NUT	M12	2
70-1106	STOP BAR		2
70-1119	GREASE NIPPLE	G 1/4"	2

BLTB-70

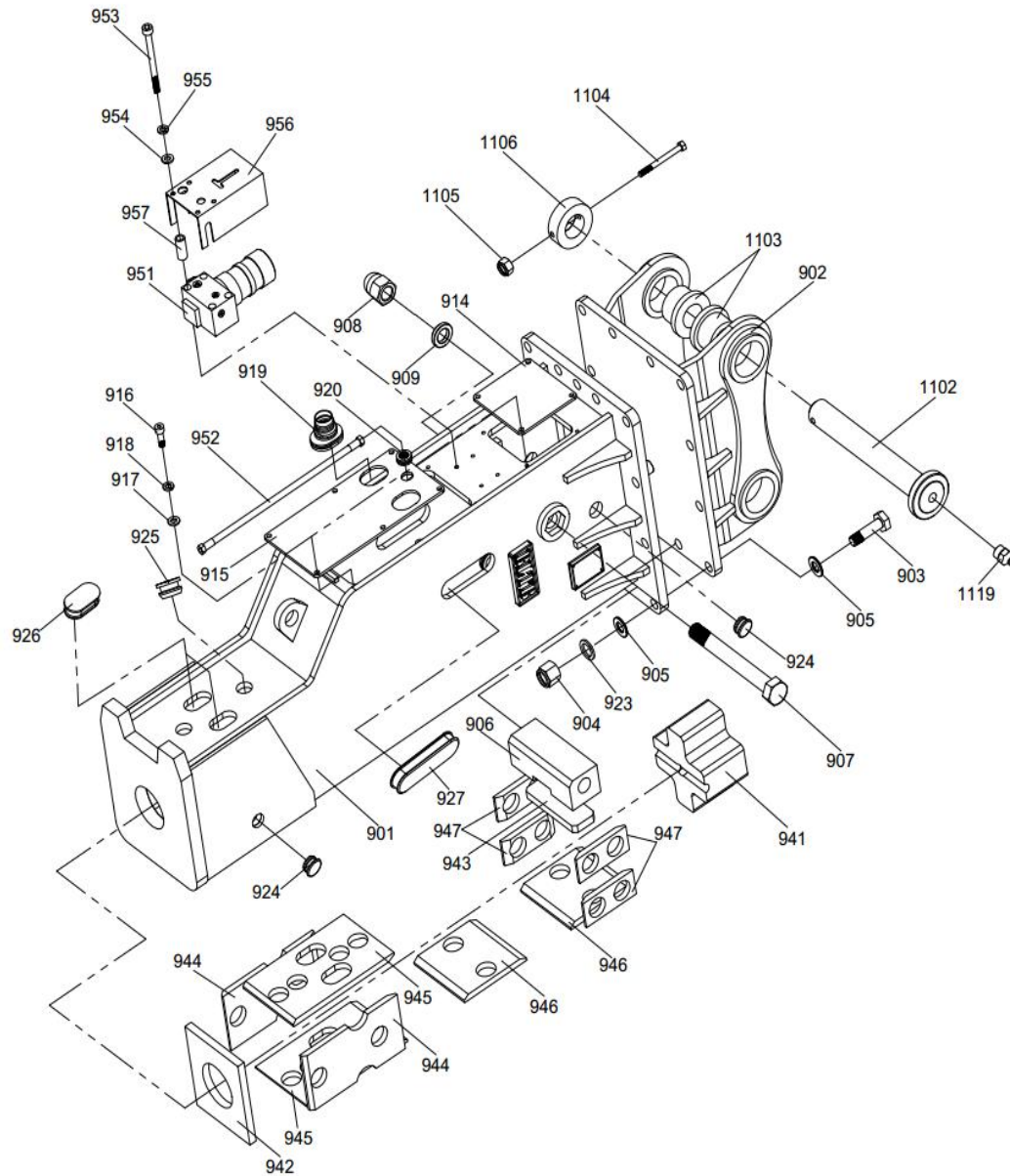


S. N.	PARTS NAME	SPEC	Q' TY
<b>75-900</b>	<b>FRAME ASS' Y</b>		
75-901	FRAME (BOX TYPE)		1
75-902	MOUNT CAP		1
75-903	M/C HEX BOLT	M20*70	8
75-904	M/C HEX NUT	M20	8
75-905	M/C SPRING WASHER	φ 20	16
75-907	SIDE HEX BOLT	M27*2*255	1
75-908	HEX NUT	M27*2	1
75-909	SPRING WASHER	φ 27	1
75-914	UP SIDE DAMPER	470*167*5	1
75-916	HEX BOLT	M10*20	6
75-917	WASHER	φ 10	6
75-918	SPRING WASHER	φ 10	6
75-919	IN/OUT PLUG		2
75-923	SPRING WASHER	φ 20	8
75-924	RUBBER PLUG		2
75-925	RUBBER PLUG		1
75-926	RUBBER PLUG		2
75-927	RUBBER PLUG		1
<b>75-940</b>	<b>BUFFER PLATE ASS'</b>		
75-941	BACK BUFFER	150*140*107	1
75-942	LOWER DAMPER	165*165*20	1
75-944	SIDE DAMPER	415*140*15	2
75-945	UP&DOWN DAMPER	415*155*15	2
75-946	SIDE DAMPER	200*140*15	1
75-947	SIDE DAMPER	120*90*15	2
75-1102	PIN		2
75-1103	T-BUSH		4
75-1104	PIN HEX BOLT	M12*90	2
75-1105	PIN HEX NUT	M12	2
75-1106	STOP BAR		2
75-1119	GREASE NIPPLE	G 1/4"	2



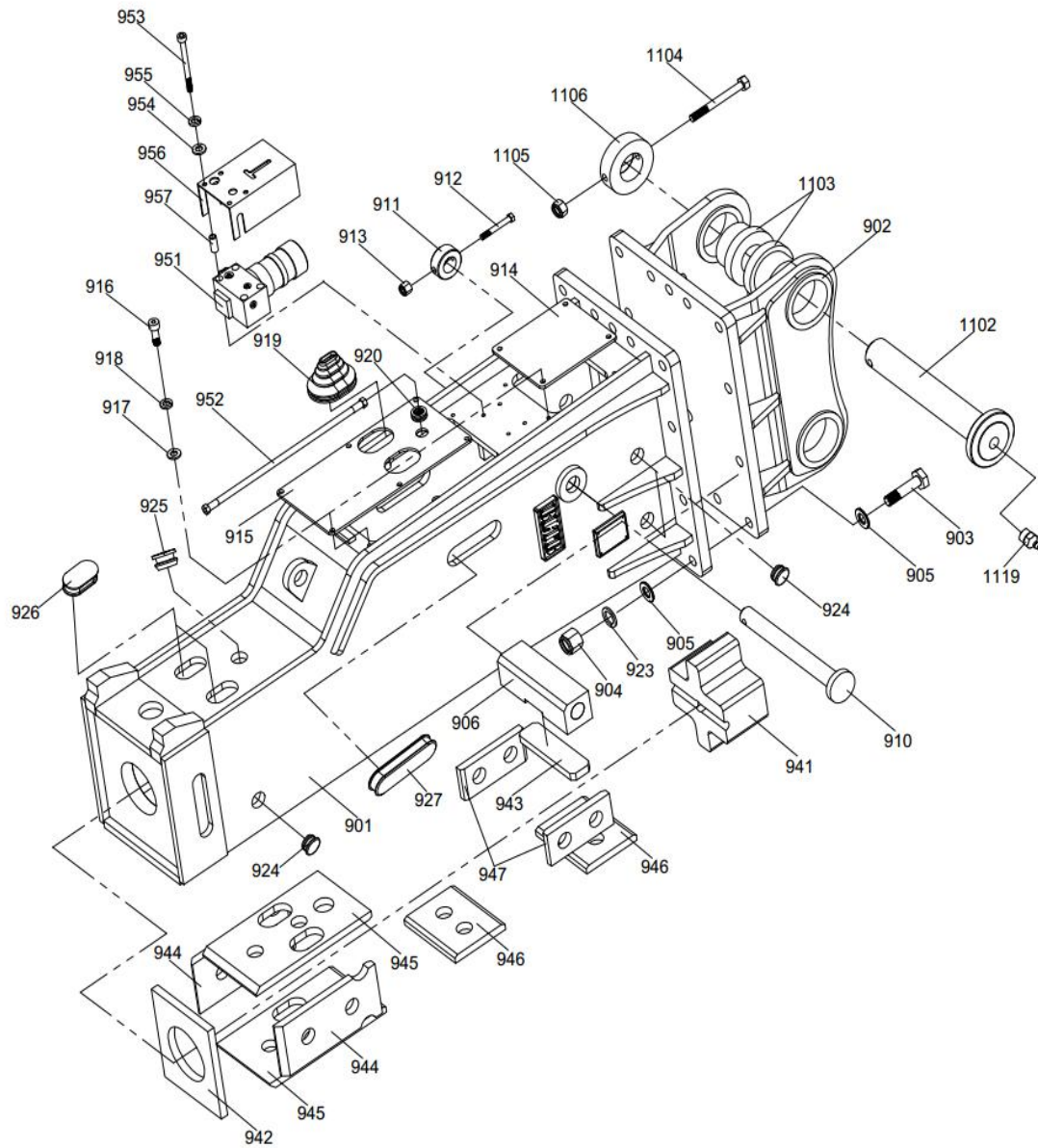
S. N.	PARTS NAME	SPEC	Q' TY
<b>85-900</b>	<b>FRAME ASS' Y</b>		
85-901	FRAME (BOX TYPE)		1
85-902	MOUNT CAP		1
85-903	M/C HEX BOLT	M20*80	12
85-904	M/C HEX NUT	M20	12
85-905	M/C SPRING WASHER	φ 20	24
85-907	SIDE HEX BOLT	M36*3*280	1
85-908	HEX NUT	M36*3	1
85-909	SPRING WASHER	φ 36	1
85-914	COVER PLATE-A	168*166*7	1
85-915	COVER PLATE-B	256*172*7	1
85-916	HEX BOLT	M10*30	8
85-917	WASHER	φ 10	8
85-918	SPRING WASHER	φ 10	8
85-919	IN/OUT PLUG		2
85-923	SPRING WASHER	φ 20	12
85-924	RUBBER PLUG		4
85-925	RUBBER PLUG		2
85-926	RUBBER PLUG		2
85-927	RUBBER PLUG		1
<b>85-940</b>	<b>BUFFER PLATE ASS'</b>		
85-941	BACK BUFFER	185*159*129	1
85-942	LOWER DAMPER	192*166*20	1
85-944	SIDE DAMPER	400*155*16	2
85-945	UP&DOWN DAMPER	400*155*16	2
85-946	SIDE DAMPER	200*155*16	2
85-947	SIDE DAMPER	160*80*16	2
85-1102	PIN		2
85-1103	T-BUSH		4
85-1104	PIN HEX BOLT	M12*130	2
85-1105	PIN HEX NUT	M12	2
85-1106	STOP BAR		2
85-1119	GREASE NIPPLE	G 1/4"	2

BLTB-85



BLTB-100

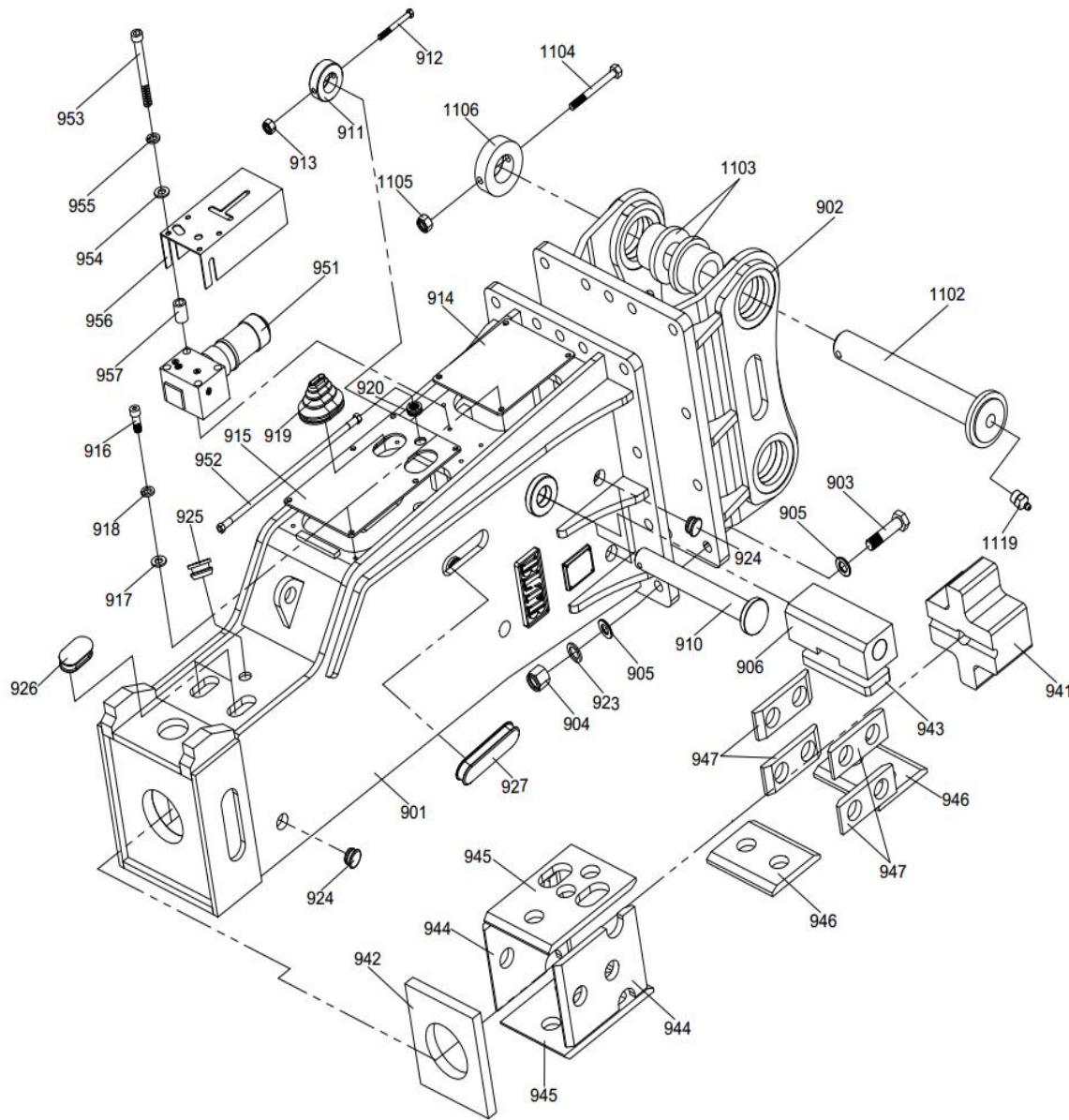
S. N.	PARTS NAME	SPEC	Q' TY
<b>100-900</b>	<b>FRAME ASS' Y</b>		
100-901	FRAME (BOX TYPE)		1
100-902	MOUNT CAP		1
100-903	M/C HEX BOLT	M24*90	12
100-904	M/C HEX NUT	M24	12
100-905	M/C SPRING WASHER	φ 24	24
100-906	CLAMP DAMPER	242*90*80	1
100-907	SIDE HEX BOLT	M36*3*310	1
100-908	HEX NUT	M36*3	1
100-909	SPRING WASHER	φ 36	1
100-914	COVER PLATE-A	194*141*7	1
100-915	COVER PLATE-B	416*212*7	1
100-916	HEX BOLT	M10*30	10
100-917	WASHER	φ 10	10
100-918	SPRING WASHER	φ 10	10
100-919	IN/OUT PLUG		2
100-920	IN/OUT PLUG COVER		1
100-923	SPRING WASHER	φ 24	12
100-924	RUBBER PLUG		3
100-925	RUBBER PLUG		1
100-926	RUBBER PLUG		2
100-927	RUBBER PLUG		1
<b>100-940</b>	<b>BUFFER PLATE ASS'</b>		
100-941	BACK BUFFER	222*200*130	1
100-942	LOWER DAMPER	232*210*20	1
100-943	CLAMP DAMPER	200*70*20	1
100-944	SIDE DAMPER	300*160*16	2
100-945	UP&DOWN DAMPER	325*200*16	2
100-946	SIDE DAMPER	200*200*16	2
100-947	SIDE DAMPER	160*70*16	4
<b>100-950</b>	<b>AUTOLUB SYSTEM</b>		
100-951	AUTOLUB SYSTEM		1
100-952	OIL HOSE PLUG	G 1/4"	1
100-953	HEX BOLT	M10*100	4
100-954	WASHER	φ 10	4
100-955	SPRING WASHER	φ 10	4
100-956	AUTOLUB TOOL COVER		1
100-957	AUTOLUB TOOL NUT	φ 18* φ 12*38	4
100-1102	PIN		2
100-1103	T-BUSH		4
100-1104	PIN HEX BOLT	M12*130	2
100-1105	PIN HEX NUT	M12	2
100-1106	STOP BAR		2
100-1119	GREASE NIPPLE	G 1/4"	2



BLTB-125

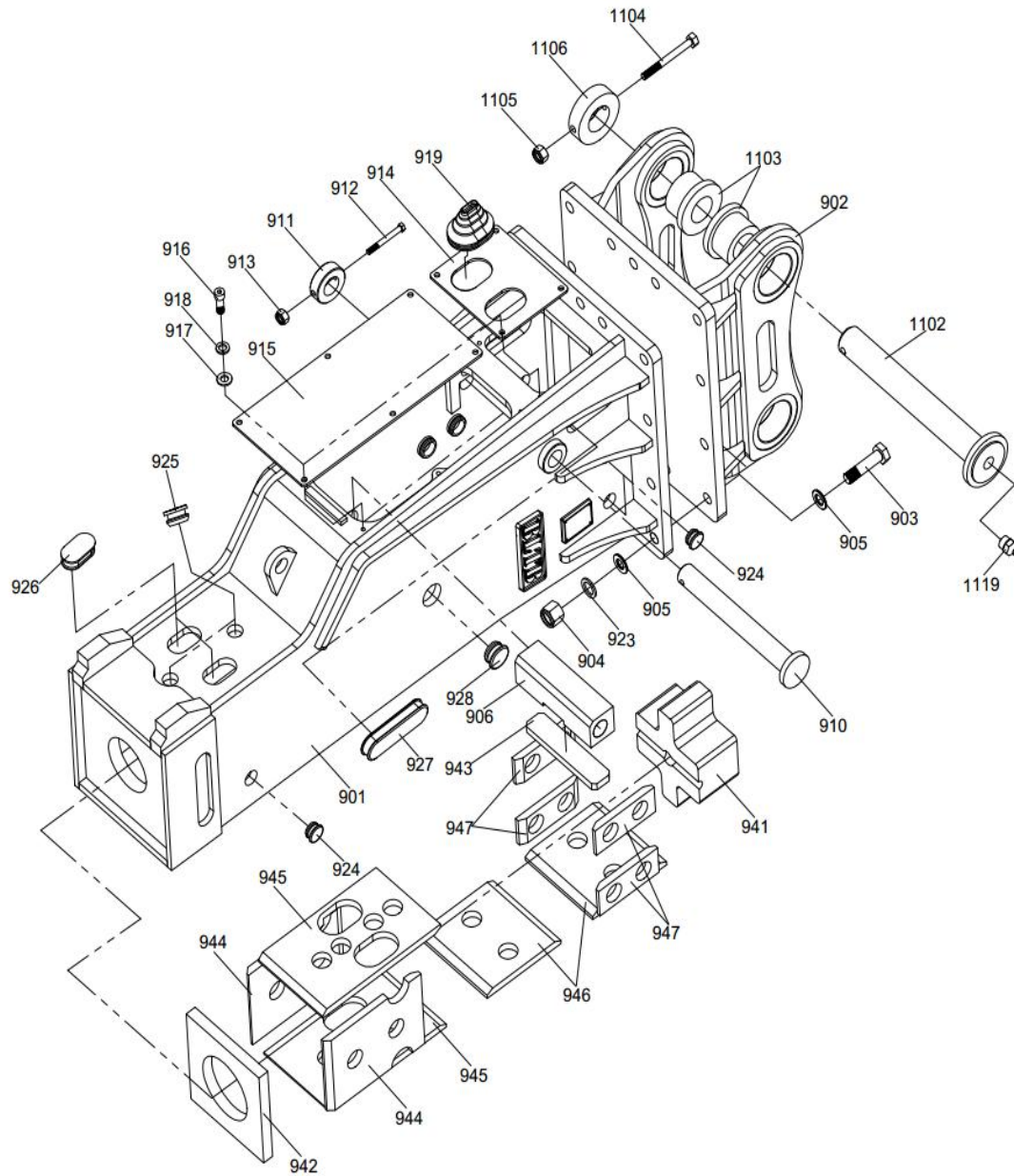
S. N.	PARTS NAME	SPEC	Q' TY
<b>125-900</b>	<b>FRAME ASS'Y</b>		
125-901	FRAME (BOX TYPE)		1
125-902	MOUNT CAP		1
125-903	M/C HEX BOLT	M24*100	12
125-904	M/C HEX NUT	M24	12
125-905	M/C SPRING WASHER	φ 24	24
125-906	CLAMP DAMPER	310*145*20	1
125-910	CLAMP BOLT	φ 40*347	1
125-911	STOP BAR	φ 40* φ 75*30	1
125-912	HEX BOLT	M12*90	1
125-913	HEX NUT	M12	1
125-914	COVER PLATE-A	185*185*7	1
125-915	COVER PLATE-B	410*210*7	1
125-916	HEX BOLT	M10*30	10
125-917	WASHER	φ 10	10
125-918	SPRING WASHER	φ 10	10
125-919	IN/OUT PLUG		2
125-920	IN/OUT PLUG COVER		1
125-923	SPRING WASHER	φ 24	12
125-924	RUBBER PLUG		3
125-925	RUBBER PLUG		1
125-926	RUBBER PLUG		2
125-927	RUBBER PLUG		1
<b>125-940</b>	<b>BUFFER PLATE ASS'</b>		
125-941	BACK BUFFER	262*80*80	1
125-942	LOWER DAMPER	250*213*130	1
125-943	CLAMP DAMPER	258*222*20	1
125-944	SIDE DAMPER	218*60*20	2
125-945	UP&DOWN DAMPER	370*210*20	2
125-946	SIDE DAMPER	200*160*20	2
125-947	SIDE DAMPER	200*90*20	2
<b>125-950</b>	<b>AUTOLUB SYSTEM</b>		
125-951	AUTOLUB SYSTEM		1
125-952	OIL HOSE PLUG	G 1/4"	1
125-953	HEX BOLT	M10*125	4
125-954	WASHER	φ 10	4
125-955	SPRING WASHER	φ 10	4
125-956	AUTOLUB TOOL COVER		1
125-957	AUTOLUB TOOL NUT	φ 18* φ 12*38	4
125-1102	PIN		2
125-1103	T-BUSH		4
125-1104	PIN HEX BOLT	M16*160	2
125-1105	PIN HEX NUT	M16	2
125-1106	STOP BAR		2
125-1119	GREASE NIPPLE	G 1/4"	2





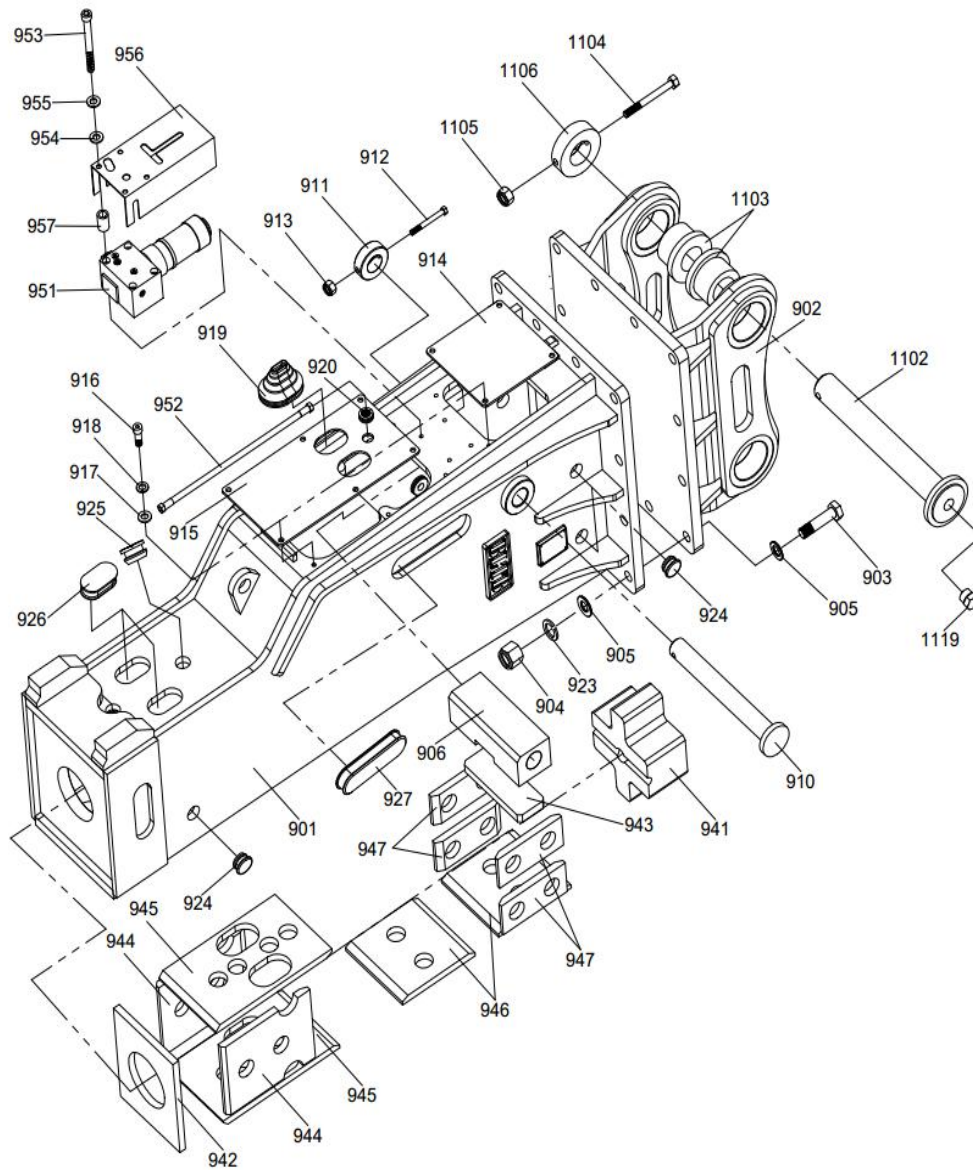
BLTB-135

S. N.	PARTS NAME	SPEC	Q'TY
<b>135-900</b>	<b>FRAME ASS'Y</b>		
135-901	FRAME (BOX TYPE)		1
135-902	MOUNT CAP		1
135-903	M/C HEX BOLT	M27*110	12
135-904	M/C HEX NUT	M27	12
135-905	M/C SPRING WASHER	φ 27	24
135-906	CLAMP DAMPER	288*110*95	1
135-910	CLAMP BOLT	φ 50*388	1
135-911	STOP BAR	φ 50* φ 95*30	1
135-912	HEX BOLT	M12*110	1
135-913	HEX NUT	M12	1
135-914	COVER PLATE-A	246*227*6	1
135-915	COVER PLATE-B	414*252*6	1
135-916	HEX BOLT	M12*30	10
135-917	WASHER	φ 12	10
135-918	SPRING WASHER	φ 12	10
135-919	IN/OUT PLUG		2
135-920	IN/OUT PLUG COVER		1
135-923	SPRING WASHER	φ 27	12
135-924	RUBBER PLUG		3
135-925	RUBBER PLUG		1
135-926	RUBBER PLUG		2
135-927	RUBBER PLUG		1
<b>135-940</b>	<b>BUFFER PLATE ASS'</b>		
135-941	BACK BUFFER	287*239*132	1
135-942	LOWER DAMPER	292*248*30	1
135-943	CLAMP DAMPER	247*90*25	1
135-944	SIDE DAMPER	288*236*20	2
135-945	UP&DOWN DAMPER	330*236*20	2
135-946	SIDE DAMPER	240*180*20	2
135-947	SIDE DAMPER	200*80*20	4
<b>135-950</b>	<b>AUTOLUB SYSTEM</b>		
135-951	AUTOLUB SYSTEM		1
135-952	OIL HOSE PLUG	G 1/4"	1
135-953	HEX BOLT	M12*120	4
135-954	WASHER	φ 12	4
135-955	SPRING WASHER	φ 12	4
135-956	AUTOLUB TOOL COVER		1
135-957	AUTOLUB TOOL NUT	φ 20* φ 13*30	4
135-1102	PIN		2
135-1103	T-BUSH		4
135-1104	PIN HEX BOLT	M16*160	2
135-1105	PIN HEX NUT	M16	2
135-1106	STOP BAR		2
135-1119	GREASE NIPPLE	G 1/4"	2



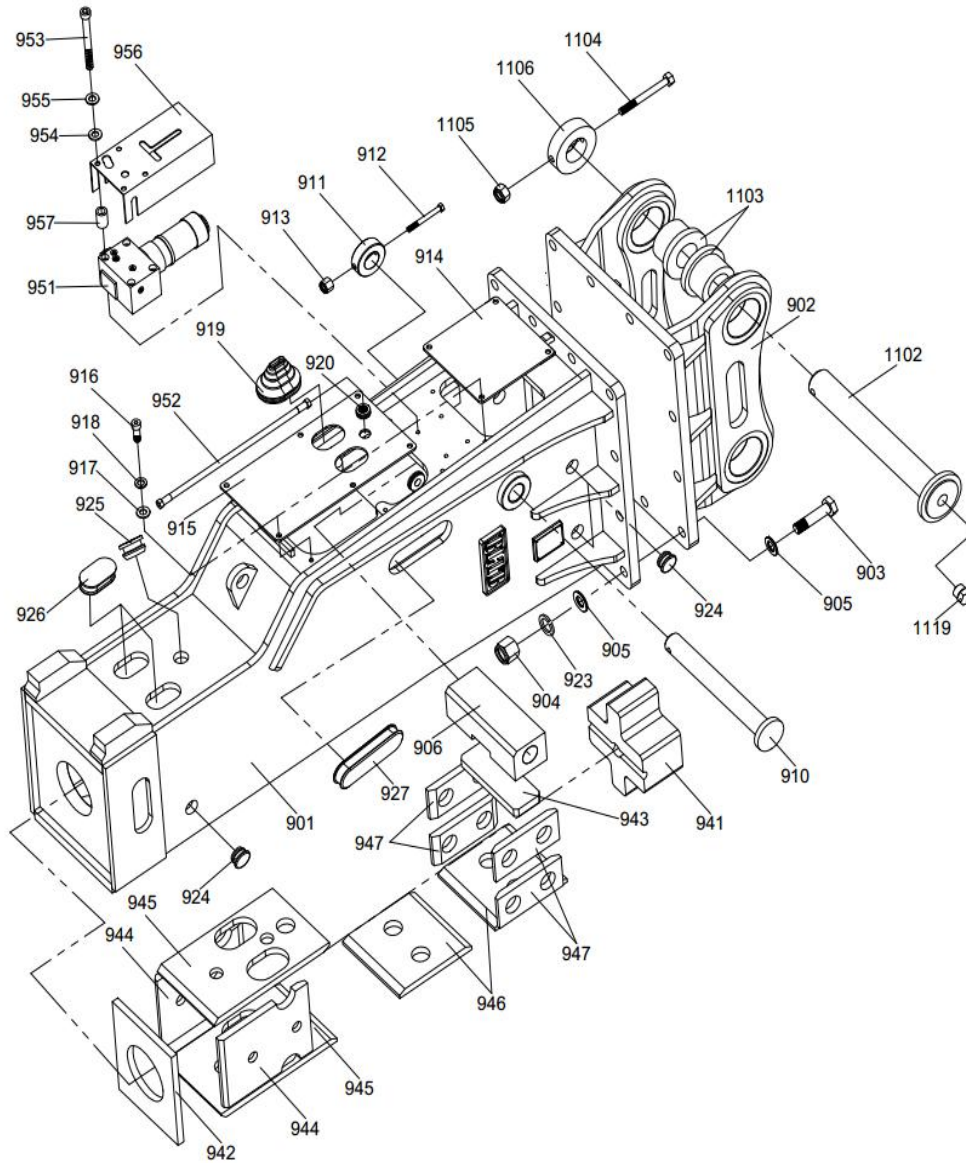
BLTB-135

S. N.	PARTS NAME	SPEC	Q' TY
<b>135G-900</b>	<b>FRAME ASS' Y</b>		
135G-901	FRAME (BOX TYPE)		1
135G-902	MOUNT CAP		1
135G-903	M/C HEX BOLT	M27*110	12
135G-904	M/C HEX NUT	M27	12
135G-905	M/C SPRING WASHER	φ 27	24
135G-906	CLAMP DAMPER	300*80*80	1
135G-910	CLAMP BOLT	φ 45*400	1
135G-911	STOP BAR	φ 45* φ 78*30	1
135G-912	HEX BOLT	M12*100	1
135G-913	HEX NUT	M12	1
135G-914	COVER PLATE-A	260*219*7	1
135G-915	COVER PLATE-B	560*260*7	1
135G-916	HEX BOLT	M12*30	10
135G-917	WASHER	φ 12	10
135G-918	SPRING WASHER	φ 12	10
135G-919	IN/OUT PLUG		2
135G-923	SPRING WASHER	φ 27	12
135G-924	RUBBER PLUG		3
135G-925	RUBBER PLUG		2
135G-926	RUBBER PLUG		2
135G-927	RUBBER PLUG		1
135G-928	RUBBER PLUG		1
<b>135G-940</b>	<b>BUFFER PLATE ASS'</b>		
135G-941	BACK BUFFER	239*239*130	1
135G-942	LOWER DAMPER	260*260*30	1
135G-943	CLAMP DAMPER	250*60*20	1
135G-944	SIDE DAMPER	278*190*20	2
135G-945	UP&DOWN DAMPER	373*240*20	2
135G-946	SIDE DAMPER	240*180*20	2
135G-947	SIDE DAMPER	200*80*20	4
135G-1102	PIN		2
135G-1103	T-BUSH		4
135G-1104	PIN HEX BOLT	M16*160	2
135G-1105	PIN HEX NUT	M16	2
135G-1106	STOP BAR		2
135G-1119	GREASE NIPPLE	G 1/4"	2



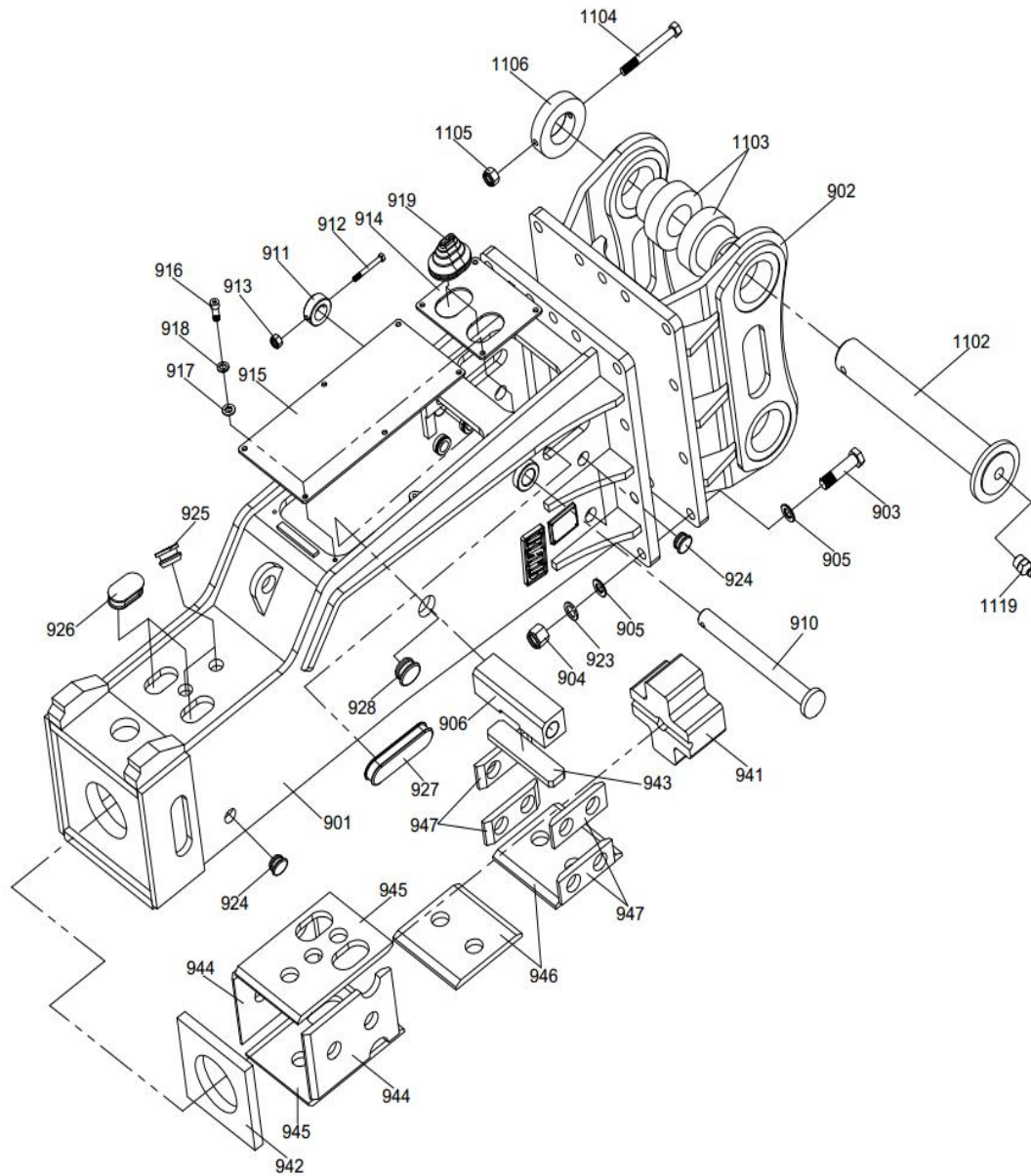
BLTB-140

S. N.	PARTS NAME	SPEC	Q' TY
<b>140-900</b>	<b>FRAME ASS' Y</b>		
140-901	FRAME (BOX TYPE)		1
140-902	MOUNT CAP		1
140-903	M/C HEX BOLT	M27*110	12
140-904	M/C HEX NUT	M27	12
140-905	M/C SPRING WASHER	φ 27	24
140-906	CLAMP DAMPER	297*110*95	1
140-910	CLAMP BOLT	φ 50*397	1
140-911	STOP BAR	φ 50* φ 95*30	1
140-912	HEX BOLT	M12*110	1
140-913	HEX NUT	M12	1
140-914	COVER PLATE-A	258*257*6	1
140-915	COVER PLATE-B	484*257*6	1
140-916	HEX BOLT	M12*30	10
140-917	WASHER	φ 12	10
140-918	SPRING WASHER	φ 12	10
140-919	IN/OUT PLUG		2
140-920	IN/OUT PLUG COVER		1
140-923	SPRING WASHER	φ 27	12
140-924	RUBBER PLUG		3
140-925	RUBBER PLUG		1
140-926	RUBBER PLUG		2
140-927	RUBBER PLUG		1
<b>140-940</b>	<b>BUFFER PLATE ASS'</b>		
140-941	BACK BUFFER	287*239*132	1
140-942	LOWER DAMPER	306*257*30	1
140-943	CLAMP DAMPER	247*90*25	1
140-944	SIDE DAMPER	300*236*20	2
140-945	UP&DOWN DAMPER	400*247*20	2
140-946	SIDE DAMPER	250*247*20	2
140-947	SIDE DAMPER	220*100*20	4
<b>140-950</b>	<b>AUTOLUB SYSTEM</b>		
140-951	AUTOLUB SYSTEM		1
140-952	OIL HOSE PLUG	G 1/4"	1
140-953	HEX BOLT	M12*120	4
140-954	WASHER	φ 12	4
140-955	SPRING WASHER	φ 12	4
140-956	AUTOLUB TOOL COVER		1
140-957	AUTOLUB TOOL NUT	φ 20* φ 13*30	4
140-1102	PIN		2
140-1103	T-BUSH		4
140-1104	PIN HEX BOLT	M16*160	2
140-1105	PIN HEX NUT	M16	2
140-1106	STOP BAR		2
140-1119	GREASE NIPPLE	G 1/4"	2



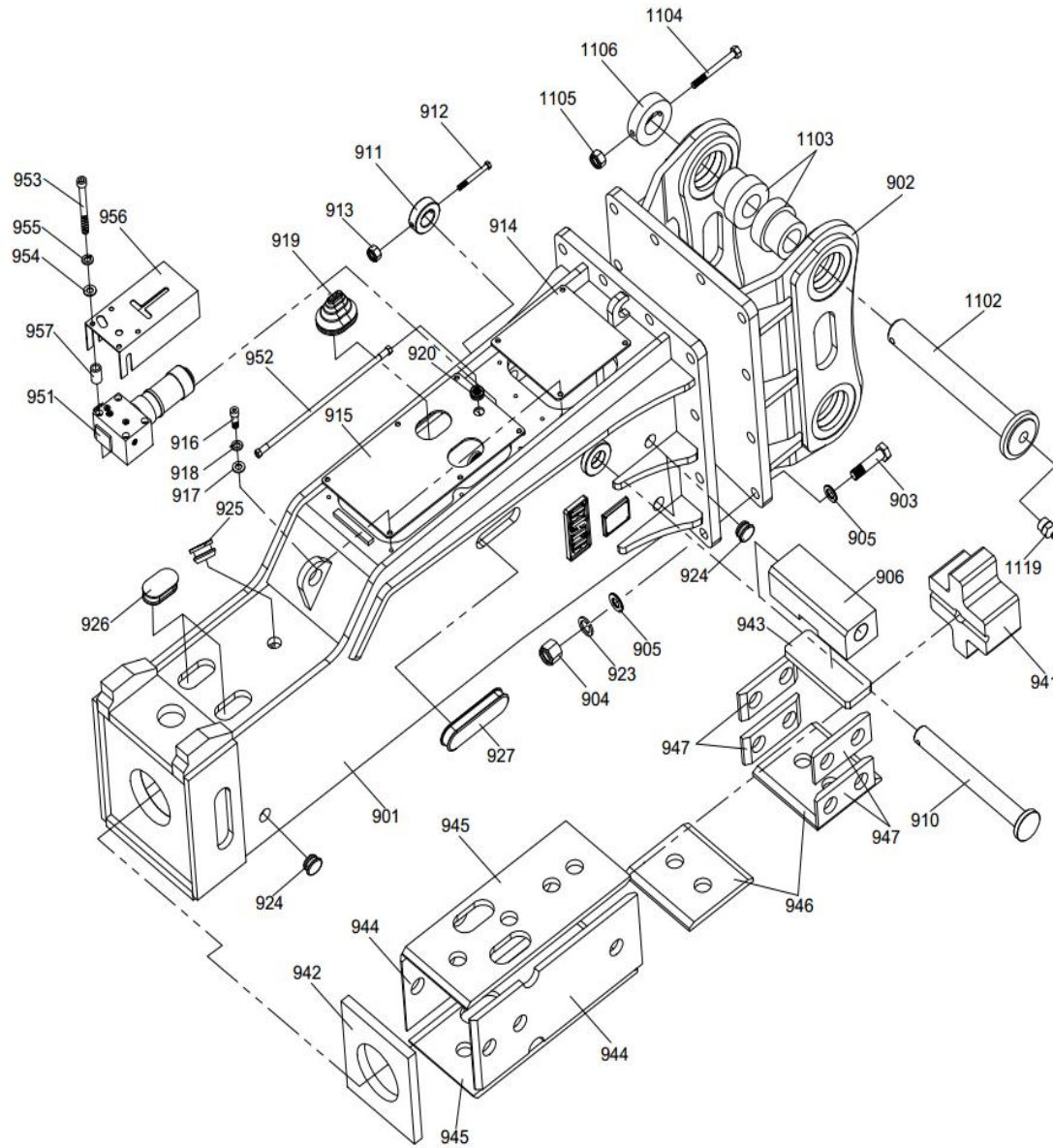
BLTB-150

S. N.	PARTS NAME	SPEC	Q' TY
<b>150-900</b>	<b>FRAME ASS' Y</b>		
150-901	FRAME (BOX TYPE)		1
150-902	MOUNT CAP		1
150-903	M/C HEX BOLT	M30*120	12
150-904	M/C HEX NUT	M30	12
150-905	M/C SPRING WASHER	φ 30	24
150-906	CLAMP DAMPER	310*120*100	1
150-910	CLAMP BOLT	φ 50*414	1
150-911	STOP BAR	φ 50* φ 95*30	1
150-912	HEX BOLT	M12*110	1
150-913	HEX NUT	M12	1
150-914	COVER PLATE-A	290*278*7	1
150-915	COVER PLATE-B	503*278*7	1
150-916	HEX BOLT	M12*35	10
150-917	WASHER	φ 12	10
150-918	SPRING WASHER	φ 12	10
150-919	IN/OUT PLUG		2
150-920	IN/OUT PLUG COVER		1
150-923	SPRING WASHER	φ 27	12
150-924	RUBBER PLUG		3
150-925	RUBBER PLUG		1
150-926	RUBBER PLUG		2
150-927	RUBBER PLUG		1
<b>150-940</b>	<b>BUFFER PLATE ASS'</b>		
150-941	BACK BUFFER	307*261*153	1
150-942	LOWER DAMPER	316*270*30	1
150-943	CLAMP DAMPER	260*100*25	1
150-944	SIDE DAMPER	335*242*20	2
150-945	UP&DOWN DAMPER	405*260*20	2
150-946	SIDE DAMPER	260*220*20	2
150-947	SIDE DAMPER	220*100*20	4
<b>150-950</b>	<b>AUTOLUB SYSTEM</b>		
150-951	AUTOLUB SYSTEM		1
150-952	OIL HOSE PLUG	G 1/4"	1
150-953	HEX BOLT	M12*120	4
150-954	WASHER	φ 12	4
150-955	SPRING WASHER	φ 12	4
150-956	AUTOLUB TOOL COVER		1
150-957	AUTOLUB TOOL NUT	φ 20* φ 13*30	4
150-1102	PIN		2
150-1103	T-BUSH		4
150-1104	PIN HEX BOLT	M20*190	2
150-1105	PIN HEX NUT	M20	2
150-1106	STOP BAR		2
150-1119	GREASE NIPPLE	G 1/4"	2



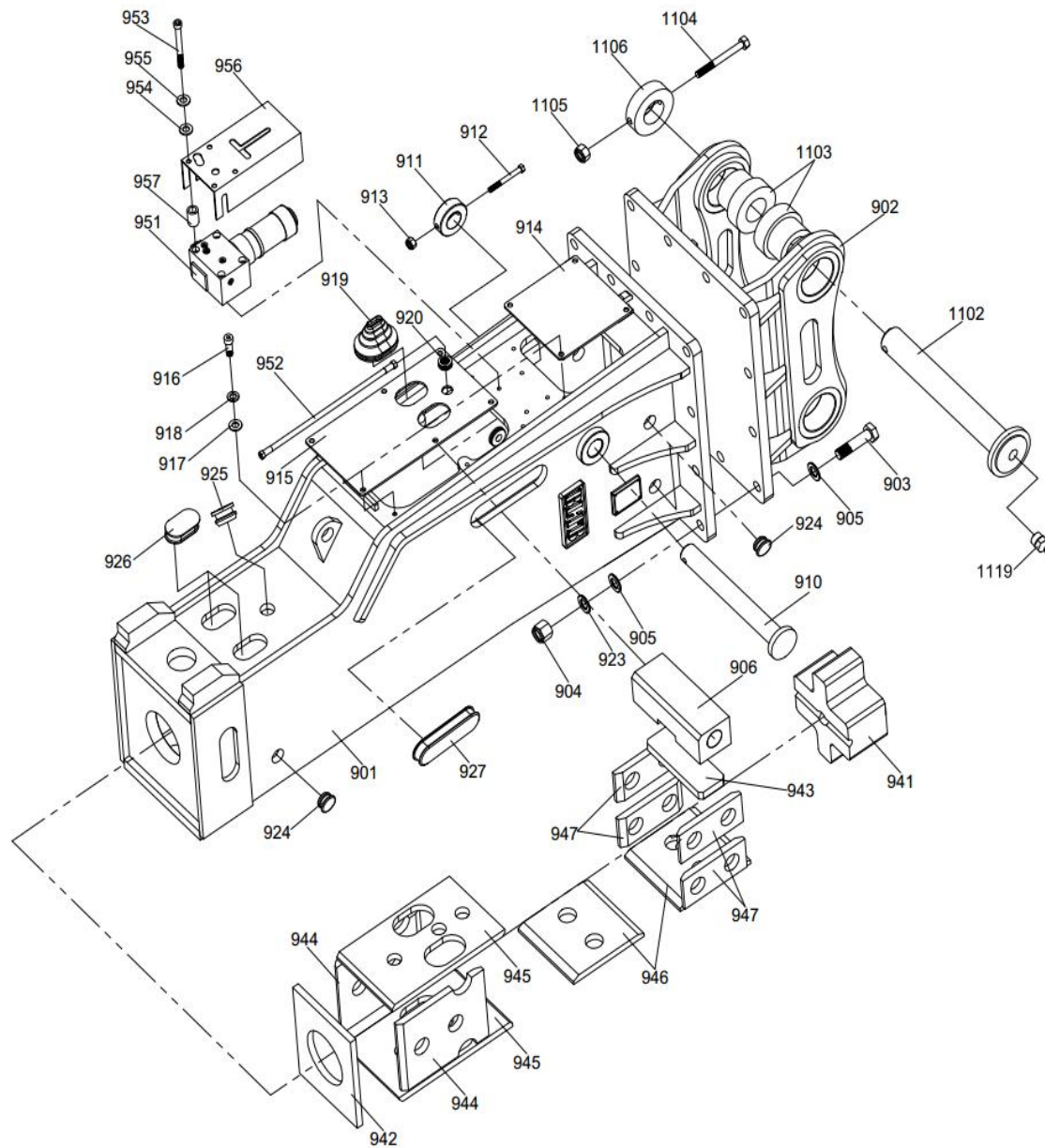
BLTB-150G

S. N.	PARTS NAME	SPEC	Q' TY
<b>150G-900</b>	<b>FRAME ASS'Y</b>		
150G-901	FRAME (BOX TYPE)		1
150G-902	MOUNT CAP		1
150G-903	M/C HEX BOLT	M30*120	12
150G-904	M/C HEX NUT	M30	12
150G-905	M/C SPRING WASHER	φ 30	24
150G-906	CLAMP DAMPER	320*80*60	1
150G-910	CLAMP BOLT	φ 45*424	1
150G-911	STOP BAR	φ 45* φ 78*30	1
150G-912	HEX BOLT	M12*100	1
150G-913	HEX NUT	M12	1
150G-914	COVER PLATE-A	280*230*7	1
150G-915	COVER PLATE-B	610*280*7	1
150G-916	HEX BOLT	M12*35	10
150G-917	WASHER	φ 12	10
150G-918	SPRING WASHER	φ 12	10
150G-919	IN/OUT PLUG		2
150G-923	SPRING WASHER	φ 30	12
150G-924	RUBBER PLUG		3
150G-925	RUBBER PLUG		2
150G-926	RUBBER PLUG		2
150G-927	RUBBER PLUG		1
150G-928	RUBBER PLUG		1
<b>150G-940</b>	<b>BUFFER PLATE ASS'</b>		
150G-941	BACK BUFFER	265*265*100	1
150G-942	LOWER DAMPER	280*280*30	1
150G-943	CLAMP DAMPER	270*60*20	1
150G-944	SIDE DAMPER	320*230*20	2
150G-945	UP&DOWN DAMPER	360*260*20	2
150G-946	SIDE DAMPER	260*250*20	2
150G-947	SIDE DAMPER	200*80*20	4
150G-1102	PIN		2
150G-1103	T-BUSH		4
150G-1104	PIN HEX BOLT	M20*190	2
150G-1105	PIN HEX NUT	M20	2
150G-1106	STOP BAR		2
150G-1119	GREASE NIPPLE	G 1/4"	2



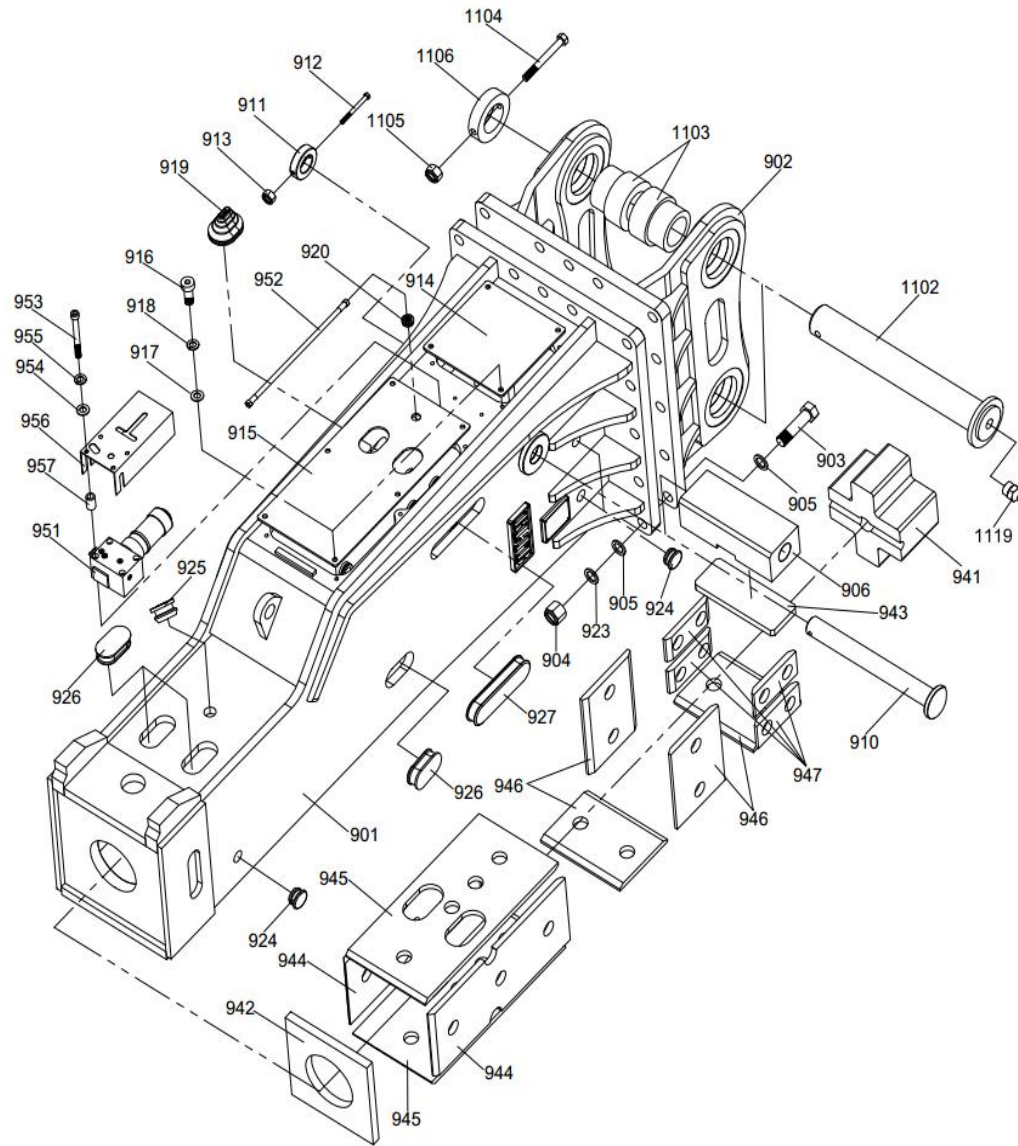
BLTB-155

S. N.	PARTS NAME	SPEC	Q' TY
<b>155-900</b>	<b>FRAME ASS' Y</b>		
155-901	FRAME (BOX TYPE)		1
155-902	MOUNT CAP		1
155-903	M/C HEX BOLT	M30*120	12
155-904	M/C HEX NUT	M30	12
155-905	M/C SPRING WASHER	φ 30	24
155-906	CLAMP DAMPER	328*120*100	1
155-910	CLAMP BOLT	φ 50*432	1
155-911	STOP BAR	φ 50* φ 95*30	1
155-912	HEX BOLT	M12*110	1
155-913	HEX NUT	M12	1
155-914	COVER PLATE-A	294*288*6	1
155-915	COVER PLATE-B	535*294*6	1
155-916	HEX BOLT	M12*35	10
155-917	WASHER	φ 12	10
155-918	SPRING WASHER	φ 12	10
155-919	IN/OUT PLUG		2
155-920	IN/OUT PLUG COVER		1
155-923	SPRING WASHER	φ 30	12
155-924	RUBBER PLUG		3
155-925	RUBBER PLUG		1
155-926	RUBBER PLUG		2
155-927	RUBBER PLUG		1
<b>155-940</b>	<b>BUFFER PLATE ASS'</b>		
155-941	BACK BUFFER	307*261*153	1
155-942	LOWER DAMPER	326*288*30	1
155-943	CLAMP DAMPER	278*100*25	1
155-944	SIDE DAMPER	640*264*20	2
155-945	UP&DOWN DAMPER	640*278*20	2
155-946	SIDE DAMPER	278*250*20	2
155-947	SIDE DAMPER	220*100*20	4
<b>155-950</b>	<b>AUTOLUB SYSTEM</b>		
155-951	AUTOLUB SYSTEM		1
155-952	OIL HOSE PLUG	G 1/4"	1
155-953	HEX BOLT	M12*120	4
155-954	WASHER	φ 12	4
155-955	SPRING WASHER	φ 12	4
155-956	AUTOLUB TOOL COVER		1
155-957	AUTOLUB TOOL NUT	φ 20* φ 13*30	4
155-1102	PIN		2
155-1103	T-BUSH		2
155-1104	PIN HEX BOLT	M20*190	4
155-1105	PIN HEX NUT	M20	2
155-1106	STOP BAR		2
155-1119	GREASE NIPPLE	G 1/4"	2



BLTB-165

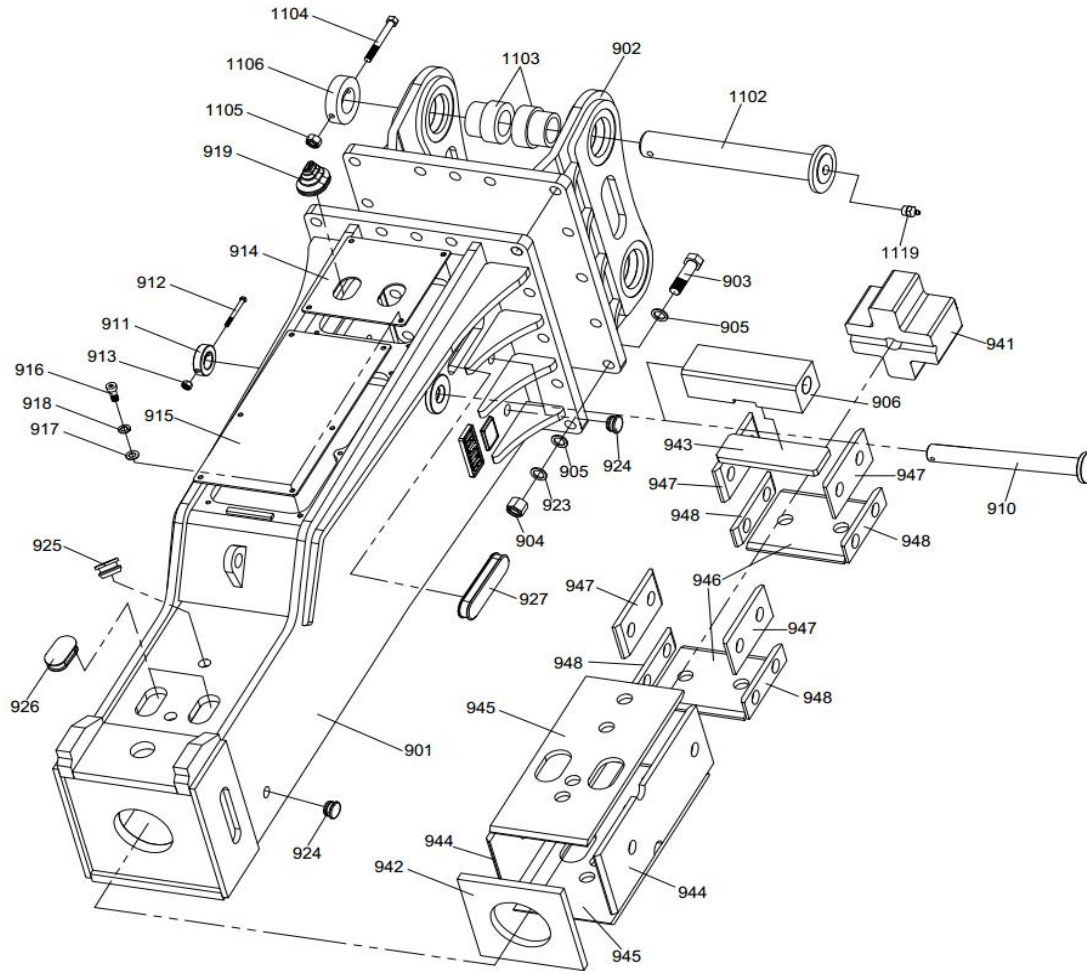
S. N.	PARTS NAME	SPEC	Q' TY
165-900	FRAME ASS'Y		
165-901	FRAME (BOX TYPE)		1
165-902	MOUNT CAP		1
165-903	M/C HEX BOLT	M33*130	12
165-904	M/C HEX NUT	M33	12
165-905	M/C SPRING WASHER	φ 33	24
165-906	CLAMP DAMPER	338*140*110	1
165-910	CLAMP BOLT	φ 60*450	1
165-911	STOP BAR	φ 60* φ 113*35	1
165-912	HEX BOLT	M12*130	1
165-913	HEX NUT	M12	1
165-914	COVER PLATE-A	310*298*7	1
165-915	COVER PLATE-B	555*298*7	1
165-916	HEX BOLT	M14*35	10
165-917	WASHER	φ 14	10
165-918	SPRING WASHER	φ 14	10
165-919	IN/OUT PLUG		2
165-920	IN/OUT PLUG COVER		1
165-923	SPRING WASHER	φ 33	12
165-924	RUBBER PLUG		3
165-925	RUBBER PLUG		1
165-926	RUBBER PLUG		2
165-927	RUBBER PLUG		1
165-940	BUFFER PLATE ASS'		
165-941	BACK BUFFER	309*280*153	1
165-942	LOWER DAMPER	328*298*30	1
165-943	CLAMP DAMPER	288*120*25	1
165-944	SIDE DAMPER	320*260*20	2
165-945	UP&DOWN DAMPER	465*288*20	2
165-946	SIDE DAMPER	288*250*20	2
165-947	SIDE DAMPER	220*100*20	4
165-950	AUTOLUB SYSTEM		
165-951	AUTOLUB SYSTEM		1
165-952	OIL HOSE PLUG	G 1/4"	1
165-953	HEX BOLT	M12*120	4
165-954	WASHER	φ 12	4
165-955	SPRING WASHER	φ 12	4
165-956	AUTOLUB TOOL COVER		1
165-957	AUTOLUB TOOL NUT	φ 20* φ 13*30	4
165-1102	PIN		2
165-1103	T-BUSH		4
165-1104	PIN HEX BOLT	M20*190	2
165-1105	PIN HEX NUT	M20	2
165-1106	STOP BAR		2
165-1119	GREASE NIPPLE	G 1/4"	2



BLTB-175

S. N.	PARTS NAME	SPEC	Q' TY
<b>175L-900</b>	<b>FRAME ASS' Y</b>		
175L-901	FRAME (BOX TYPE)		1
175L-902	MOUNT CAP		1
175L-903	M/C HEX BOLT	M36*140	14
175L-904	M/C HEX NUT	M36	14
175L-905	M/C SPRING WASHER	φ 36	28
175L-906	CLAMP DAMPER	390*150*120	1
175L-910	CLAMP BOLT	φ 60*508	1
175L-911	STOP BAR	φ 60* φ 113*35	1
175L-912	HEX BOLT	M12*130	1
175L-913	HEX NUT	M12	1
175L-914	COVER PLATE-A	340*340*7	1
175L-915	COVER PLATE-B	710*340*7	1
175L-916	HEX BOLT	M14*35	10
175L-917	WASHER	φ 14	10
175L-918	SPRING WASHER	φ 14	10
175L-919	IN/OUT PLUG		2
175L-920	IN/OUT PLUG COVER		1
175L-923	SPRING WASHER	φ 36	14
175L-924	RUBBER PLUG 1		3
175L-925	RUBBER PLUG 2		1
175L-926	RUBBER PLUG 3		3
175L-927	RUBBER PLUG 4		1
<b>175L-940</b>	<b>BUFFER PLATE ASS'</b>		
175L-941	BACK BUFFER	333*306*192	1
175L-942	LOWER DAMPER	350*350*30	1
175L-943	CLAMP DAMPER	340*130*25	1
175L-944	SIDE DAMPER	700*280*20	2
175L-945	UP&DOWN DAMPER	700*340*20	2
175L-946	SIDE DAMPER	340*250*20	4
175L-947	SIDE DAMPER	220*100*20	4
<b>175L-950</b>	<b>AUTOLUB SYSTEM</b>		
175L-951	AUTOLUB SYSTEM		1
175L-952	OIL HOSE PLUG	G 1/4"	1
175L-953	HEX BOLT	M12*120	4
175L-954	WASHER	φ 12	4
175L-955	SPRING WASHER	φ 12	4
175L-956	AUTOLUB TOOL COVER		1
175L-957	AUTOLUB TOOL NUT	φ 20* φ 13*30	4
175L-1102	PIN		2
175L-1103	T-BUSH		4
175L-1104	PIN HEX BOLT	M20*190	2
175L-1105	PIN HEX NUT	M20	2
175L-1106	STOP BAR		2
175L-1119	GREASE NIPPLE	G 1/4"	2





BLTB-190

S. N.	PARTS NAME	SPEC	Q' TY
<b>190G-900</b>	<b>FRAME ASS' Y</b>		
190G-901	FRAME (BOX TYPE)		1
190G-902	MOUNT CAP		1
190G-903	M/C HEX BOLT	M36*140	15
190G-904	M/C HEX NUT	M36	15
190G-905	M/C SPRING WASHER	φ 36	30
190G-906	CLAMP DAMPER	410*140*120	1
190G-910	CLAMP BOLT	φ 60*528	1
190G-911	STOP BAR	φ 60*φ 108*28	1
190G-912	HEX BOLT	M12*130	1
190G-913	HEX NUT	M12	1
190G-914	COVER PLATE-A	380*360*7	1
190G-915	COVER PLATE-B	770*360*7	1
190G-916	HEX BOLT	M14*35	10
190G-917	WASHER	φ 14	10
190G-918	SPRING WASHER	φ 14	10
190G-919	IN/OUT PLUG		2
190G-923	SPRING WASHER	φ 36	15
190G-924	RUBBER PLUG		3
190G-925	RUBBER PLUG		1
190G-926	RUBBER PLUG		2
190G-927	RUBBER PLUG		1
<b>190G-940</b>	<b>BUFFER PLATE ASS'</b>		
190G-941	BACK BUFFER	400*350*192	1
190G-942	LOWER DAMPER	370*370*30	1
190G-943	CLAMP DAMPER	360*120*25	1
190G-944	SIDE DAMPER	780*280*20	2
190G-945	UP&DOWN DAMPER	780*350*20	2
190G-946	SIDE DAMPER	350*300*20	2
190G-947	SIDE DAMPER	300*150*20	4
190G-948	SIDE DAMPER	300*80*20	4
190G-1102	PIN		2
190G-1103	T-BUSH		4
190G-1104	PIN HEX BOLT	M20*190	2
190G-1105	PIN HEX NUT	M20	2
190G-1106	STOP BAR		2
190G-1119	GREASE NIPPLE	G 1/4"	2